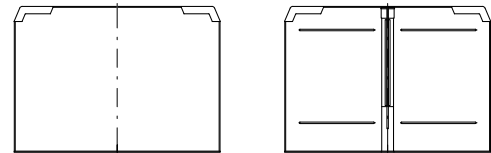
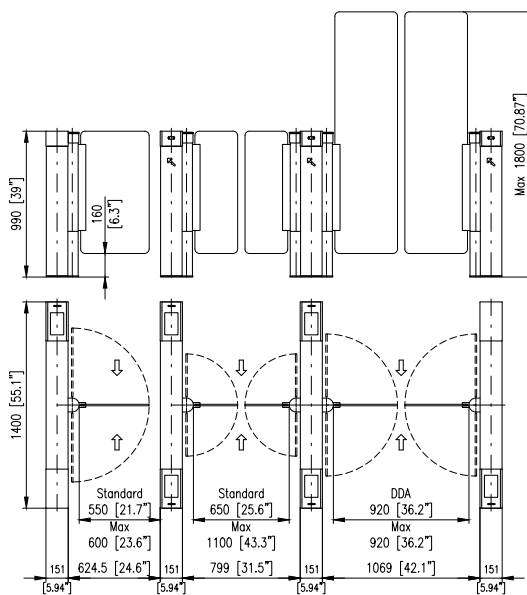
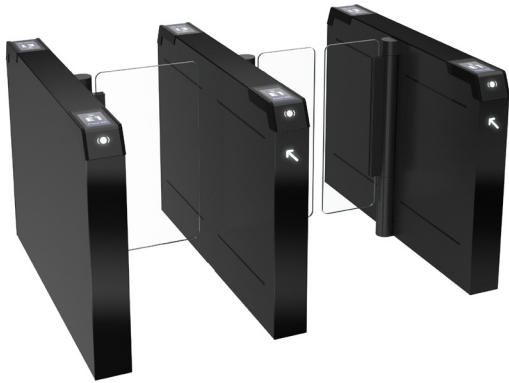


EASYGATE LiftCall

STYLISH. DISCREET. FLEXIBLE.

CENTAMAN
Entrance Control



AT A GLANCE

- Opening time from 0.7 seconds
- MTBF of 3,000,000 operations
- 24 month warranty
- Manufactured in Europe to ISO900

SPECIFICATIONS

DIMENSIONS

Standard:	1400mm(L) x 150mm(W) x 990mm(H)
Barrier Height:	990mm – 1800mm
Lane width:	500mm – 1100mm (customisable)
Gap Between barriers:	40mm
MBTF:	3,000,000 operations
Warranty:	24 months
Sensors:	Up to 30 sensor pairs
Power Supply Input:	230 volts
Control Electronics:	12 V DC
Current:	Standby 0.4 A
Consumption:	Operational 6 A

Operating Temp:	10°C to 50°C (with heater)
Motor:	12 V DC
Operation Mode:	Normally Closed
Control:	Card In / Card Out Card In / No Exit Card In / Free Exit Locked Free Passage
Pictograms:	Wait Mode (White Indicator) Access Granted (Green Indicator) Illegal Transaction (Red Indicator)
Barrier Opening Time (Standard lane):	0.7 Seconds
MATERIALS	
Top Cover:	8mm Smoked Glass (other options)
Front Cover:	Smoked Glass
Side Panels:	Stainless Steel (304 Brushed) coloured stainless steel as a cost option
Frame:	Steel

Specifications subject to change without prior notice.