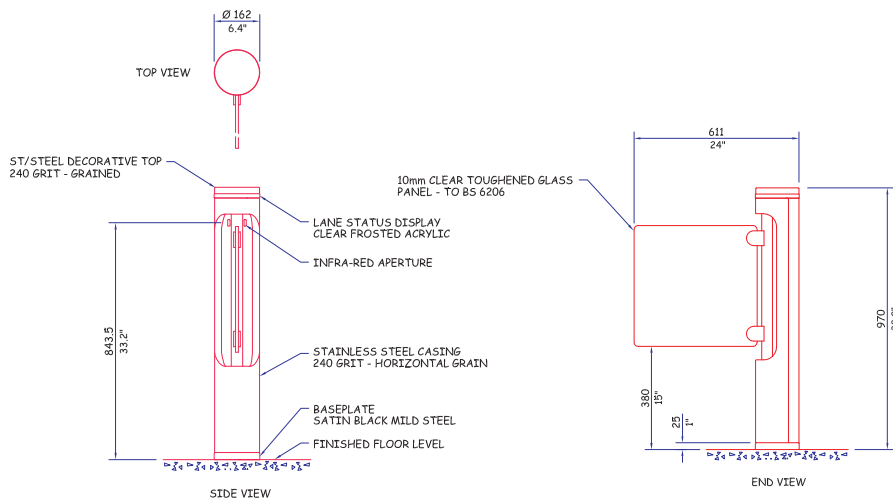


Setting New Standards In Entrance Control



Technical Specifications

Unit Information - Single Pedestal Dimensions



Power Requirements:

24v DC Supply current 2A max per lane
Mains PSU supplied (115v or 230v).

Optics:

2 pulsed multi infra-red beams

Display:

Tri Colour LED display

Sounders:

Single Tone Sounder: Card Authorisation, Alarm Events e.g. Forced Gate, Unauthorised Access.

Inputs:

Require voltage-free switching contacts (current sense 1mA typical)

Entry Request (NORMALLY OPEN)

Exit Request (NORMALLY OPEN)

Visitor Access (NORMALLY OPEN)

Outputs:

Voltage free relay contacts rated 0.5A, 28vDC in two groups for the following functions:

Output to System:

Entry Request (NORMALLY OPEN)

Exit Request (NORMALLY OPEN)

Alarm (NORMALLY CLOSED)

Operating Modes:

- Card In/Card Out • Card Entry/Push Button Exit
- Push Button Entry/Card Out • Push Button Entry/Push Button Exit

Opening/closing time:

2-5 seconds

Standard Lane Width: 550 mm - 1000 mm (21.7 - 39.3")

Wide Glass Lane Width: 1220 mm (48")

Pedestal Weight: 20 kg (44lbs)

Standard Glass Weight (Small Panel): 4.5 kg (10lbs) per panel

Wide Glass Weight: (Large Panel) 9.5 kg (21lbs) per panel

Pedestal Height: 970 mm (38.2")

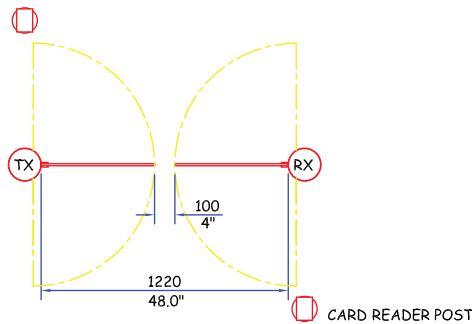
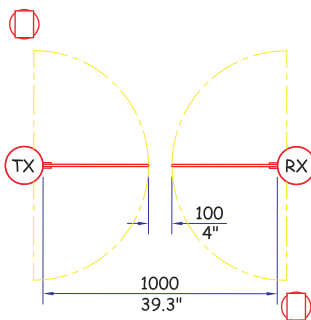
Pedestal Width: 162 mm (6.4" \varnothing)

Pedestal Length: 162 mm (6.4" \varnothing)

Turnstile Operation:

As defined in the Factory Acceptance Test Specification

Pedestal Configurations



Specification subject to change without prior notice.

Tailgate Detection

With the tailgate detecting configuration the Intelligate resolves this problem by monitoring how many people pass through the gate when it is open, in the event that the number of people is more than the authorised amount or in the wrong direction the system is designed to generate an alarm. As the system knows when a person has passed through and it takes into account their speed the gate will close quickly behind them; this reduces the open and vulnerable time. Additionally the Intelligate configured this way reduces the risk of someone being hit by the closing gate as it knows when the last person has passed through the open gateway and will close its barrier accordingly. The Fastlane Intelligate functions automatically and, in the event that someone enters without authorisation, an alarm will sound and a relay will be triggered; this can be used to control stricter security actions such as triggering CCTV, locking doors or controlling elevators.



Manufactured by: Integrated Design Ltd

ISSUE DATE 27/07/09

www.fastlane-turnstiles.com

*Subject to speed of users

Installation photos may not represent current production models

Accessories and Optional Extras

Fastlane Floor Protector

The Fastlane Floor Protector system is designed for temporary installations and enables Fastlanes to be installed quickly and cost effectively, without drilling or otherwise damaging the floor on which they stand.

Fastlane Infill System

The Fastlane Infill System is a series of decorative modular panels, which complement the Fastlane speedgates by guiding users in the desired direction.

Fastlane Remote Control

This desk mounted controller is designed to allow the guard to override some of the features of the Fastlanes, facilitate visitor entry and to give a visual indication of alarms at the guard desk.

Card Reader Mounting

A number of alternative card reader mounting options are available.

Alternative material and colour finishes

IDL offers a full design service for custom enclosures, as well as alternative colours and materials.

Distributed Throughout
Australia & New Zealand by:



CENTAMAN Systems

Sydney (02) 9906 7522
Melbourne (03) 9530 6830
Brisbane (07) 3852 2535
Perth (08) 9345 3599
Auckland, NZ (09) 579 4600

sales@centaman.com.au
www.centaman.com.au